

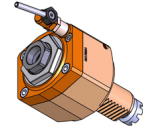


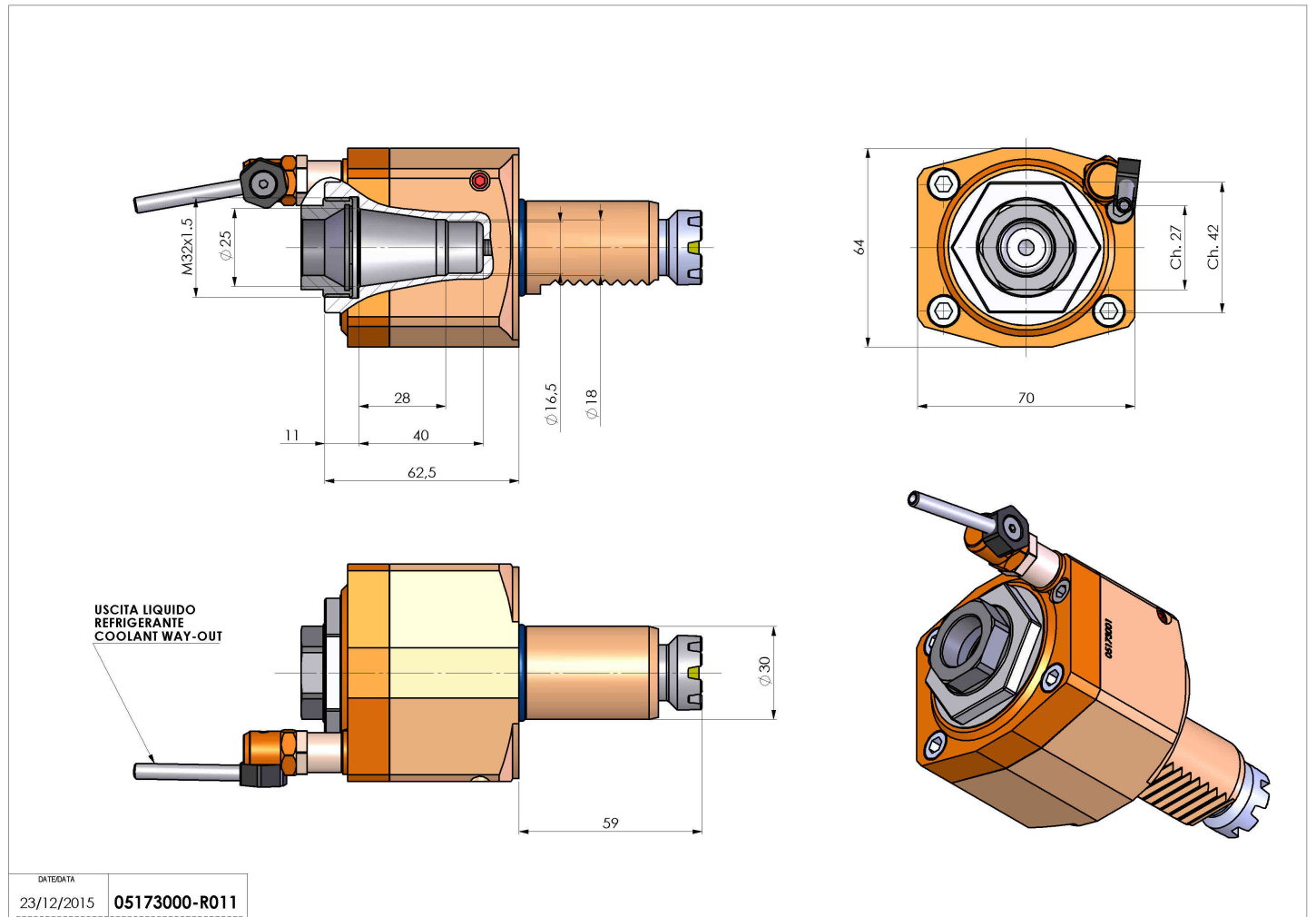
05173000 - LT-S VDI30 ER25-F H62 BA

| | |
|------------------------------|---|
| Type | LT-S Tool holder straight |
| Mounting | VDI 30 |
| Tool output | Collet nut ER 25 F - internal nut |
| Coolant | External coolant |
| Direction of rotation | r1  r2  |
| Max speed [rpm] | 6000 |
| Max torque [Nm] | 30 |
| Ratio | 1:1 |
| H [mm] | 62.5 |
| Accessories | |
| Notes | Cannot be mounted near an offset angular |
| Mounting tips | Not suitable for every application, please check |



IMPORTANT: CHECK CAREFULLY THE VDI ORIENTATION

Always check live tool dimensions on the turret

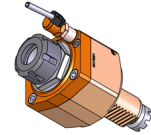


| | |
|---------------|------------|
| DATE/DATE | 23/12/2015 |
| 05173000-R011 | |

Subject to technical changes

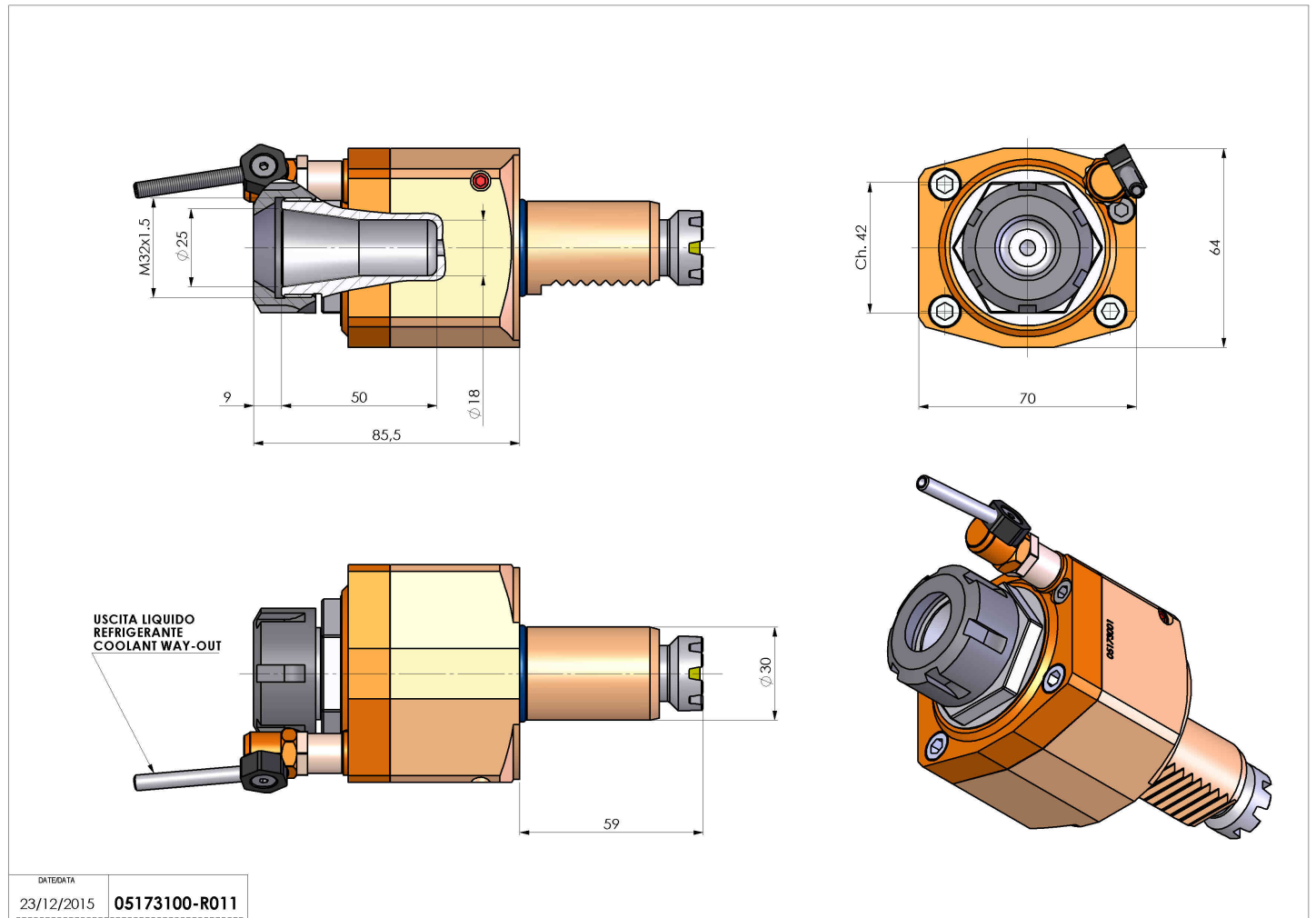
05173100 - LT-S VDI30 ER25 H85 BA

| | |
|-----------------------|--|
| Type | LT-S Tool holder straight |
| Mounting | VDI 30 |
| Tool output | Collet nut ER 25 |
| Coolant | External coolant |
| Direction of rotation | r1 ↻ r2 ↻ |
| Max speed [rpm] | 6000 |
| Max torque [Nm] | 30 |
| Ratio | 1:1 |
| H [mm] | 85,5 |
| Accessories | |
| Notes | N.A. |
| Mounting tips | Not suitable for every application, please check |



IMPORTANT: CHECK CAREFULLY THE VDI ORIENTATION

Always check live tool dimensions on the turret

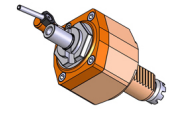


| | |
|------------|---------------|
| DATE/DATE | 05173100-R011 |
| 23/12/2015 | |

Subject to technical changes

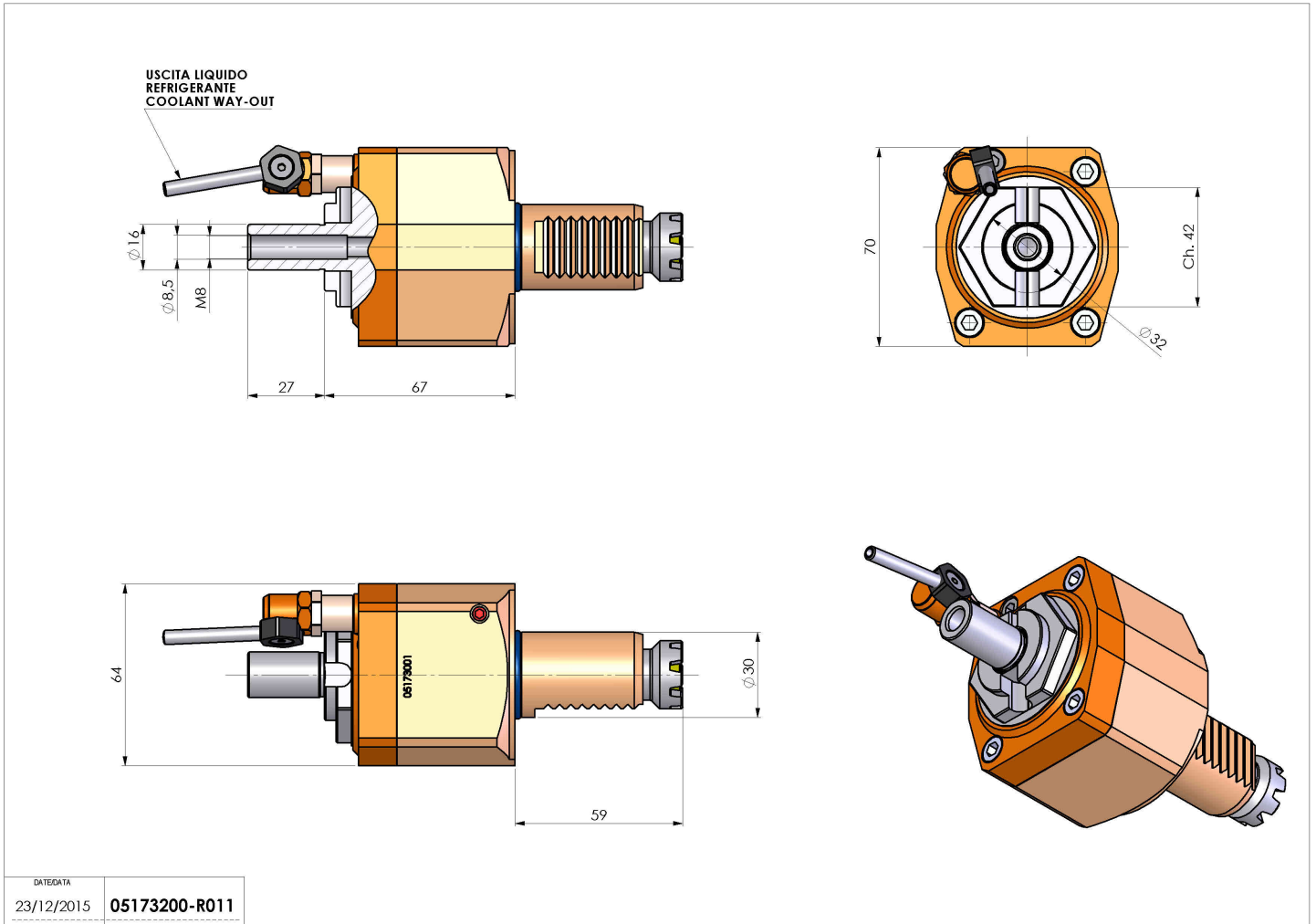
05173200 - LT-S VDI30 DIN138-16 H67 BA

| | |
|------------------------------|--|
| Type | LT-S Tool holder straight |
| Mounting | VDI 30 |
| Tool output | Shell-Mill DIN138 16 |
| Coolant | External coolant |
| Direction of rotation | r1 r2 |
| Max speed [rpm] | 6000 |
| Max torque [Nm] | 30 |
| Ratio | 1:1 |
| H [mm] | 67 |
| Accessories | |
| Notes | Cannot be mounted near an offset angular |
| Mounting tips | Not suitable for every application, please check |



IMPORTANT: CHECK CAREFULLY THE VDI ORIENTATION

Always check live tool dimensions on the turret



| | |
|-------------|---------------|
| DATE/GATA | 23/12/2015 |
| PART NUMBER | 05173200-R011 |

Subject to technical changes