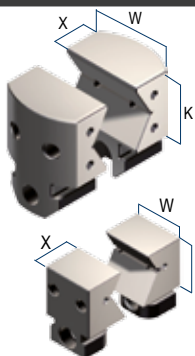


GANASCE & PIASTRE GANASCE PER MORSE MULTITASKING Art.640J

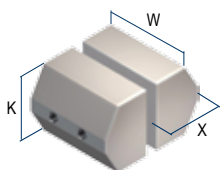
JAWS & JAW PLATES FOR MULTITASKING VISES Art.640J

Tipo (grandezza) / Type (size)	1	2	3	
Art. 655J Tipo / Type 1-2 Coppia di ganasce integrali prismatiche Prismatic solid jaws (1 pair)	W 74	99	78	78
	K 60	80	75	95
	X 49	59	59	95
	Ø 30 ÷ 45	45 ÷ 70	44 ÷ 68	48 ÷ 102
	Cod. 7.65.5J100	7.65.5J200	7.65.5J316	7.65.5J326

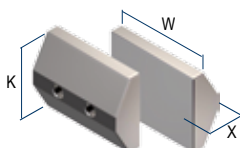


Art. 655J
Tipo / Type **3**
In Dotazione - Standard Equipment

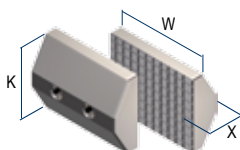
Art. 655B Piastra ganascia dolce Soft jaw-plate	K 55	70	60	
	X 38	54	49	
	Cod. 7.65.5B100	7.65.5B200	7.65.5B316	



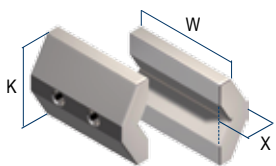
Art. 655C Piastra ganascia liscia Smooth jaw-plate	K 55	70	60	
	X 23	32	24	
	Cod. 7.65.5C100	7.65.5C200	7.65.5C316	



Art. 655D Piastra ganascia zigrinata Serrated jaw-plate	K 55	70	60	
	X 23	32	24	
	Cod. 7.65.5D100	7.65.5D200	7.65.5D316	

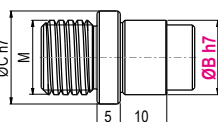


Tipo (grandezza) / Type (size)	1	2	3x166	3x266
Art. 655F Piastra ganascia prismatica Prismatic jaw-plate	K 43	54	60	60
	X 17	22	24	24
	Ø 10 ÷ 18	10 ÷ 30	12 ÷ 32	12 ÷ 38
	Cod. 7.65.5F118	7.65.5F230	7.65.5F330	
	Ø 15 ÷ 23 - 23 ÷ 30 *	25 ÷ 45	14 ÷ 34	12 ÷ 38
	Cod. 7.65.5F123	7.65.5F245	7.65.5F335	
	Ø -	-	16 ÷ 36	16 ÷ 58
	Cod. -	-	7.65.5F345	
	Ø -	-	18 ÷ 45	24 ÷ 65
	Cod. -	-	7.65.5F350	

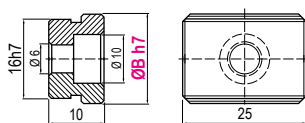


* Per Ø 23=30 ingombro max. (D1) = 132mm Ø (anziché 120mm)
For Ø 23=30 max overall dimension (D1) Ø132mm (instead of 120mm)

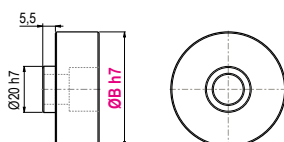
Tipo (grandezza) / Type (size)	1	2	3
Art. 79 Perno calibrato per centraggio e orientamento Calibrated centering and orientation pin	ØC h7 -	-	20
	M -	-	16
	ØB -	-	10-12-14-16-18-20
	Cod. -	-	7.79.20M16/ØB



Art. 297 Coppia di tasselli di posizionamento completi di vite M5 x 10 Pair of positioning key-nuts with M5 x 10 clamping screw	B 10 - 12 - 14 - 16 - 18 - 20 - 22 - 24 - 28 - 36	-
	Cod. 2.29.71000	-



Art. 640P Perno calibrato per centraggio Calibrated centering pin	ØB * Specificare	* Specify always
	Cod. 7.64.0P1000	7.64.0P2000



* Specificare sempre quota B - Specify always B dimension