

Tipo (grandezza) morsa / Vise type (size)

kN

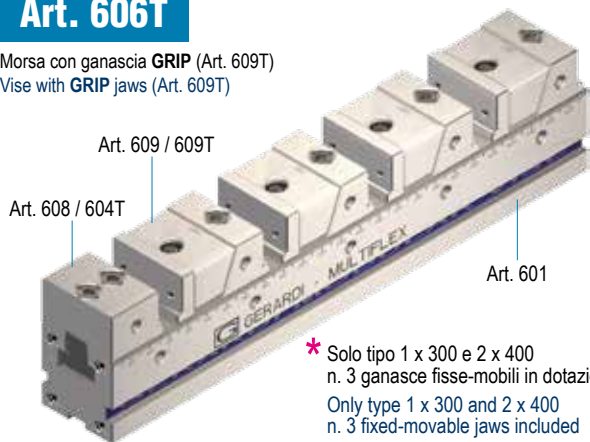
1

20 kN

Art. 606

Morsa con ganasce a gradino (Art. 609) / Vise with step jaws (Art. 609)

Art. 606T

 Morsa con ganascia GRIP (Art. 609T)
 Vise with GRIP jaws (Art. 609T)

 * Solo tipo 1 x 300 e 2 x 400
 n. 3 ganasce fisse-mobili in dotazione
 Only type 1 x 300 and 2 x 400
 n. 3 fixed-movable jaws included

	3 x 19mm *	4 x 23	4 x 48	4 x 73	4 x 97
A					
B			32 / 25		
C ⁰ / _{-0,02}			50		
D	300	400	500	600	700
G ⁰ / _{-0,02}			50		
J			38		
J1			65 / 68		
J2			59 / 62		
I			12		
L			15		
Z			100		
W			49		
Ø P			9		
Q	100	100	300	300	400
Ø F7			10		
kg	7,25	8,8	10,2	11,7	13,15
Cod. Art. 606	6.60.61300	6.60.61400	6.60.61500	6.60.61600	6.60.61700
Cod. Art. 606T	6.60.6T130	6.60.6T140	6.60.6T150	6.60.6T160	6.60.6T170

PER PARTICOLARI SOLLEVATI PER FORATURE PASSANTI
RISED WORKPIECES FOR DRILL THROUGH HOLES
AMPLIA LE TUE APPLICAZIONI TRAMITE GLI ACCESSORI MODULARI !
Art. 609

 Ganascia fissa e mobile con gradino
 Fixed and moving jaw with step


Cod. 6.60.91000

Art. 610B *

Piastra ganascia dolce / Soft jaw plate



Cod. Art. 610B 6.61.0B100

Art. 610C *

Piastra ganascia liscia / Smooth jaw plate



Cod. Art. 610C 6.61.0C100

Art. 610D *

Piastra ganascia zigrinata / Serrated jaw plate



Cod. Art. 610D 6.61.0D100

Art. 610E *

Piastra ganascia parallela / Parallel jaw plate



Cod. Art. 610E 6.61.0E100

Art. 610F *

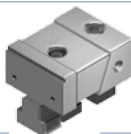
Piastra ganascia prismatica / Prismatic jaw plate



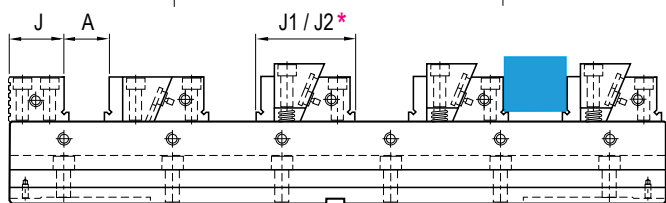
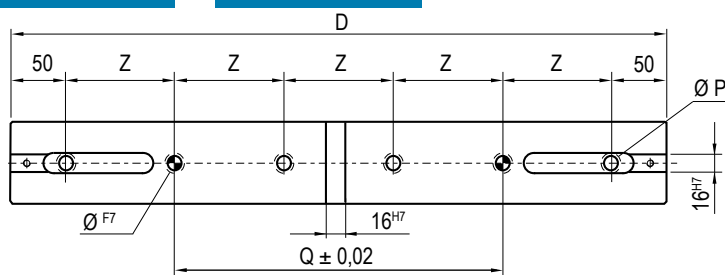
Cod. Art. 610F 6.61.0F1000

* Piastrine Art.610B - 610C - 610D - 610E - 610F dimensioni come pagina 6.34 - Jaw plates Art.610B - 610C - 610E - 610F dimensions as page 6.34

Art. 609T

 Ganascia fissa e mobile
 con piastra ganascia GRIP a forte serraggio
 Fixed and moving jaw with GRIP jaw-plates
 for strongest clamping


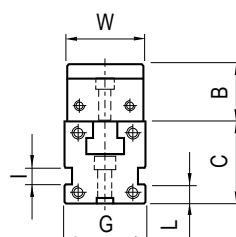
Cod. 6.60.9T100

Art. 606
Art. 606T

 Ogni morsa è completa di 1 ganascia fissa, 4 ganasce fisse-mobili
 1 chiave a T, 2 tasselli di posizionamento e 4 arresti laterali
 Each vise is supplied with 1 fixed jaw and 4 fixed-movable jaws
 1 T wrench, one pair of positioning key nuts and 4 workstops

Ø = Sede viti calibrate / Hole for shoulder screw

Art.81	Tipo - Type 1	Ø10h7 x 20
Art.81	Tipo - Type 2	Ø16h7 x 35
Art.81	Tipo - Type 3	Ø16h7 x 45

Vedi pag. 6.36 - Vedi page 6.36



Art. 600	Art. 600S	Pag.
n° 1 Art. 601		6.28
n° 1 Art. 608 / 604T		6.30
n° 4 Art. 609	n° 4 Art. 609T	6.14