

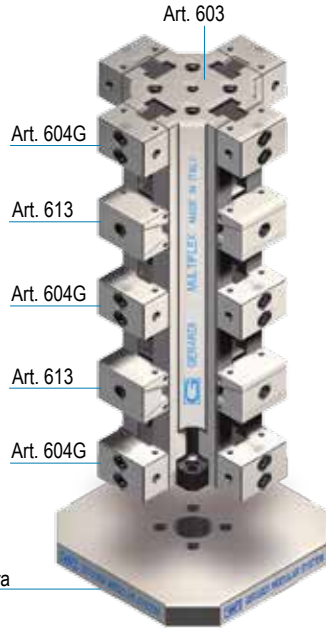
Tipo (grandezza) morsa / Vise (type) size

 1  
 20 kN

**Art. 612**

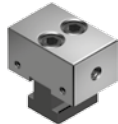
 Cubo-morsa con ganasce doppie (Art. 613)  
 Vise-tower with double jaws (Art. 613)

 Ogni cubo-morsa è completo di  
 12 ganasce fisse, 8 ganasce fisse mobili,  
 1 chiave a T,  
 1 coppia tasselli di posizionamento  
 e 16 arresti laterali

 Each vise-tower is supplied with  
 12 fixed jaws and 8 fixed-movable jaws  
 1 T wrench,  
 1 pair of positioning key nuts  
 and 16 workstops


	4 x 21mm	4 x 46	4 x 71	4 x 94	4 x 121
A					
B			25		
C <sup>-0</sup> <sub>-0.02</sub>			100		
D	300	400	500	600	700
G <sup>-0</sup> <sub>-0.02</sub>			50		
J			38		
J1			44 / 50		
H			66		
Ø I <sup>H7</sup>			50		
L			20		
M			14		
W			49		
kg	24,2	29,3	34,4	39,5	44,5
Cod.	6.61.21300	6.61.21400	6.61.21500	6.61.21600	6.61.21700

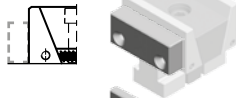
**AMPLIA LE TUE APPLICAZIONI TRAMITE GLI ACCESSORI MODULARI !**
**Art. 604G**

 Ganasca fissa liscia da entrambi i lati  
 Fixed smooth jaws both sides


Cod. 6.60.4G100

**Art. 610B \***

Piastra ganasca dolce / Soft jaw plate



Cod. Art. 610B 6.61.0B100

**Art. 610C \***

Piastra ganasca liscia / Smooth jaw plate



Cod. Art. 610C 6.61.0C100

**Art. 610D \***

Piastra ganasca zigrinata / Serrated jaw plate



Cod. Art. 610D 6.61.0D100

**Art. 610E \***

Piastra ganasca parallela / Parallel jaw plate



Cod. Art. 610E 6.61.0E100

**Art. 610F \***

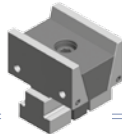
Piastra ganasca prismatica / Prismatic jaw plate



Cod. Art. 610F 6.61.0F1000

\* Piastrine Art.610B - 610C - 610D - 610E - 610F dimensioni come pagina 6.34 - Jaw plates Art.610B - 610C - 610E - 610F dimensions as page 6.34

**Art. 613**

 Ganasca mobile di spinta  
 Lamping movable jaws


Cod. 6.61.31000

**Art. 612**
