

Tipo (grandezza) morsa / Vise type (size)

Art. 602

 Cubo-morsa con ganasce lisce (Art. 605)
 Vise-tower with smooth jaws (Art. 605)

Art. 602S

 Cubo-morsa con ganasce zigrinate (Art. 605S)
 Vise-tower with serrated jaws (Art. 605S)

Art. 602W
NEW!

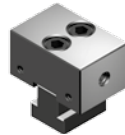
 Cubo-morsa con ganasce mobili lisce e fissa zigrinata (Art. 605W)
 Vise with smooth movable jaws and fixed serrated jaws (Art. 605W)

 Ogni cubo-morsa è completo di
 4 ganasce fisse, 16 ganasce fisse mobili,
 1 chiave a T, 1 coppia tasselli di posizionamento
 e 16 arresti laterali

 Each vise-tower is supplied with
 4 fixed jaws and 16 fixed-movable jaws
 1 T wrench, 1 pair of positioning
 key nuts and 16 workstops


kN	1				
	20 kN				
A	4 x 8mm	4 x 33	4 x 58	4 x 83	4 x 108
B	25				
B1	32 / 25				
C ⁻⁰ _{-0.02}	100				
D	300	400	500	600	700
G ⁻⁰ _{-0.02}	50				
J	38				
J1	55 / 58				
H	66				
Ø I ^{H7}	25				
L	20				
M	14				
kg	26,2	31,2	36,2	41,2	46,3
Cod. Art.602	6.60.21300	6.60.21400	6.60.21500	6.60.21600	6.60.21700
Cod. Art.602S	6.60.2S130	6.60.2S140	6.60.2S150	6.60.2S160	6.60.2S170
Cod. Art.602W	6.60.2W130	6.60.2W140	6.60.2W150	6.60.2W160	6.60.2W170

AMPLIA LE TUE APPLICAZIONI TRAMITE GLI ACCESSORI MODULARI !
Art. 604

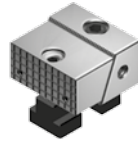
 Ganasca fissa (1 lato liscia, 1 lato zigrinata)
 Fixed jaw (1 side smooth, 1 side serrated)


Cod. 6.60.41000

Art. 605

 Ganasca mobile e fissa liscia
 Fixed and movable smooth jaws

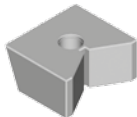
Art. 605S

 Ganasca mobile e fissa zigrinata
 Fixed and movable serrated jaws


Cod. Art.605 6.60.51000

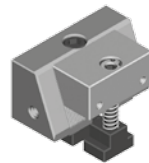
Cod. Art.605S 6.60.5S100

Art. 605L

 Cuneo di spinta a "V"
 "V" clamping wedge


Cod. 6.60.5L100

Art. 615

 Ganasca con cuneo di posizionamento maggiorato
 Jaw with bigger positioning wedge
 (increased with respect to standard dimensions)


Cod. 6.61.51000

Art. 602
Art. 602S
Art. 602W
