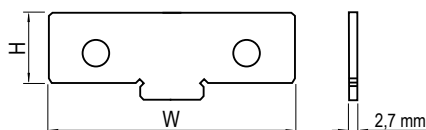
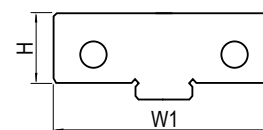


Tipo (grandezza) morsa / Vise (type) size

1	2	3	4	5	6
---	---	---	---	---	---

Art. 313

 Coppia di piastre parallele magnetiche piane
 Pair of straight parallels magnetic plates

Art. 313

Art. 313R

Art. 313

W	100	125	150	175	200	300
H	23	33	43	53	53	68
Cod.	4.31.31000	4.31.32000	4.31.33000	4.31.34000	4.31.35000	4.31.36000

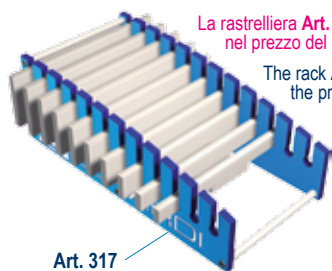
Art. 313R

W1	74	94	124	144	169	194
H	23	33	43	53	53	68
Cod.	4.31.3R100	4.31.3R200	4.31.3R300	4.31.3R400	4.31.3R500	4.31.3R600

Art. 313R

 Coppia di piastre parallele magnetiche piane ridotte
 Pair of straight parallels magnetic narrow plates

Art. 310
Set piccolo di piastre parallele magnetiche piane (Fino a 6 coppie)
 Small set of straight magnetic parallels plates (Max 6 pairs)

Art. 311
Set grande di piastre parallele magnetiche piane (Fino a 10 coppie)
 Big set of straight magnetic parallels plates (Max 10 pairs)


La rastrelliera Art. 317 (vuota) NON è inclusa nel prezzo del set. Vedi pag. 4.22

The rack Art. 317 (empty) is NOT included in the price of the set. See pag. 4.22

Art. 310

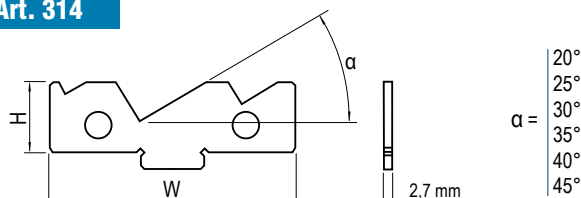
W	100	125	150	175	200	300
H Standard for INSERT GRIP	-	-	-	20	20	30
	-	-	15	25	25	35
	-	15	20	30	30	40
	-	20	25	35	35	45
	15	25	30	40	40	50
	18	28	35	45	45	54
	20	30	40	50	50	60
	23	33	43	53	53	68
	25	35	45	55	57	70
	27	37	47	57	60	75
Cod.	4.31.01000	4.31.02000	4.31.03000	4.31.04000	4.31.05000	4.31.06000

Art. 311

Cod.	-	-	4.31.13000	4.31.14000	4.31.15000	4.31.16000
------	---	---	------------	------------	------------	------------

Art. 314

 Coppia di piastre parallele magnetiche angolari
 Pair of angular magnetic parallels plates

Art. 314

Art. 310

W	100	125	150	175	200	300
H	23	33	43	53	53	68
Cod.	4.31.41000	4.31.42000	4.31.43000	4.31.44000	4.31.45000	4.31.46000

Art. 312
Set di 6 coppie di piastre parallele magnetiche angolari
 Set of 6 pairs of angular magnetic parallels plates

W	100	125	150	175	200	300
alpha				20°		
				25°		
				30°		
				35°		
				40°		
				45°		
Cod.	4.31.21000	4.31.22000	4.31.23000	4.31.24000	4.31.25000	4.31.26000

Art. 313A

 Coppia di magneti per parallele
 Pair of magnets for parallels

NON MODULARI - NOT MODULAR

Richiedono aggiustaggio in opera - Adjustment needed before working

Cod. 4.31.3A100

Per qualsiasi parallela speciale, raddoppiare il prezzo / For special tailor made parallel double the price