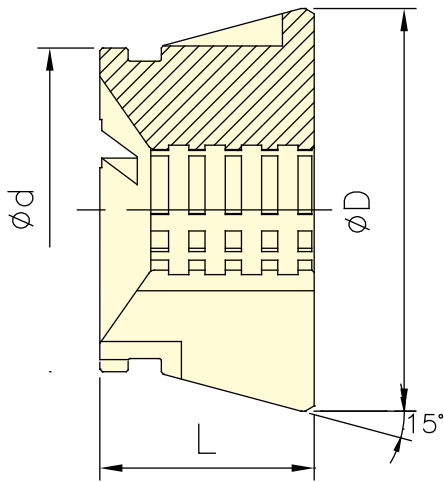


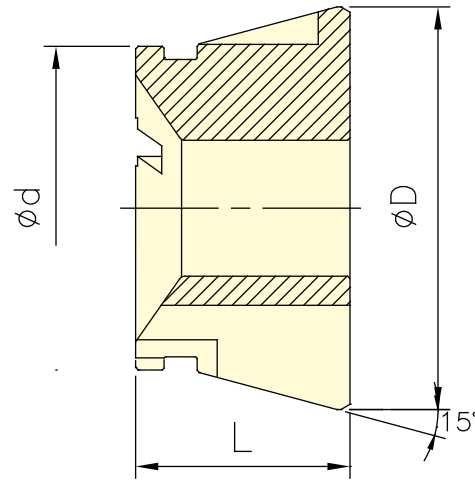


Application/customer benefits

- It is a rubber grip collet for push type or draw type collet chucks.
- Full gripping area: high rigidity, more gripping force.  
Gripping smoothly: prevent to damage the workpiece.
- More accurate than standard spring collets.  
Accuracy: With customized rubber grip collet, the accuracy can reach  $\pm 10\mu\text{m}$
- Grip Range:  $\pm 0.5\text{mm}$
- Quick change and easy.
- Dust-proof and swarf-proof design.



RG-RT



RG-R

Specifications

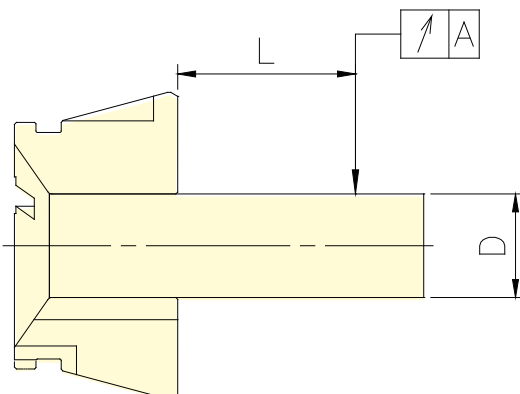
\* Subject to technical changes.

Model	Max. Chucking Capacity (mm) Round	d	D	L	Matching Collect Chuck
RG-42R	4~42	54	79.3	42	CB-42,CBE-42
RG-42RT	4~42	54	79.3	42	CB-42,CBE-42
RG-52R	4~52	66	79.3	46	CB-52,CBD-52,CBE-52
RG-52RT	4~52	66	79.3	46	CB-52,CBD-52,CBE-52
RG-65R	4~65	80	99.5	53	CB-65,CBD-65,CBE-65
RG-65RT	4~65	80	99.5	53	CB-65,CBD-65,CBE-65

Square and hex collets are made to order.

Dimensions

Test Bar D(S,H)	L mm	A DIN	
		Class1	Class2
3.0~6.0	16	0.015	0.02
6.0~10	25	0.015	0.02
10.0~18.0	40	0.02	0.03
18.0~24.0	50	0.02	0.03
24.0~30.0	60	0.02	0.03
30.0~50.0	80	0.03	0.04
50.0~60.0	100	0.03	0.04



Note01 : Collets chuck are conformed to DIN6343 Class2.

Note02 : AUTOGRIP's rubber grip collets are conformed to DIN6343 Class1.