

# Ricambi per ganasce STANDARD / Spares for STANDARD jaws

Tipo (grandezza) morsa / Vise (type) size

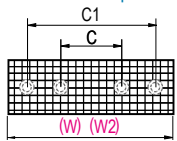
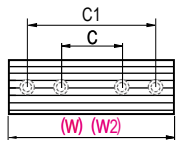
1 2 3 4 5 6

**PIASTRE TEMPRATE RIGATE O QUADRETTATE**

**HARDENED GROOVED OR SERRATED JAW PLATES**

Standard

A richiesta / On request



**Art. 230** (W)

**Art. 230S** (W)

Per ganasce fissa e mobile - Art. 120, 126, 127 - Larghezza normale (W)  
For fixed and movable jaw - Art. 120, 126, 127 - Normal width (W)

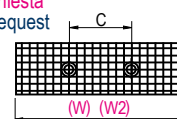
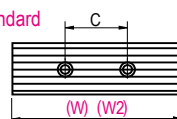
**Art. 231**

**Art. 231S**

Per ganasce fissa e mobile - Art. 121, 128, 129 - Larghezza ridotta (W2)  
For fixed and movable jaw - Art. 121, 128, 129 - Narrow width (W2)

Standard

A richiesta / On request



**Art. 248** (W)

**Art. 248S** (W)

Per ganasce fissa doppia Art. 123 - Larghezza normale (W)  
For double fixed jaw Art. 123 - Normal width (W)

**Art. 249** (W2)

**Art. 249S** (W2)

Per ganasce fissa doppia Art. 124 - Larghezza ridotta (W2)  
For double fixed jaw Art. 124 - Narrow width (W2)

**PIASTRE LISCE TEMPRATE**

Fornibili a richiesta su ganasce e morse senza variazione di prezzo

**HARDENED SMOOTH JAW PLATES**

Available on request for complete jaws and vises without price change

**Art. 232** (W)

Per ganasce fissa e mobile - Art. 120, 127, 129 - Larghezza normale (W)  
For fixed and movable jaw - Art. 120, 127, 129 - Normal width (W)

**Art. 233** (W2)

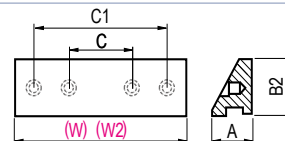
Per ganasce fissa e mobile - Art. 121, 128, 129 - Larghezza ridotta (W2)  
For fixed and movable jaw - Art. 121, 128, 129 - Narrow width (W2)

**Art. 250** (W)

Per ganasce fissa doppia Art. 123 - Larghezza normale (W)  
For double fixed jaw Art. 123 - Normal width (W)

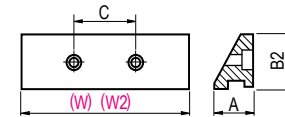
**Art. 251** (W2)

Per ganasce fissa doppia Art. 124 - Larghezza ridotta (W2)  
For double fixed jaw Art. 124 - Narrow width (W2)



Cod. Art. 232	1.65.10100	1.65.20100	1.65.30100	1.65.40100	1.65.50100	1.65.60100
---------------	------------	------------	------------	------------	------------	------------

Cod. Art. 233	1.65.11100	1.65.21100	1.65.31100	1.65.41100	1.65.51100	1.65.61100
---------------	------------	------------	------------	------------	------------	------------



Cod. Art. 250	1.65.14100	1.65.24100	1.65.34100	1.65.44100	1.65.54100	1.65.64100
---------------	------------	------------	------------	------------	------------	------------

Cod. Art. 251	1.65.15100	1.65.25100	1.65.35100	1.65.45100	1.65.55100	1.65.65100
---------------	------------	------------	------------	------------	------------	------------

**PIASTRE IN ACCIAIO LAVORABILE (DOLCE)**

Fornibili a richiesta su ganasce e morse senza variazione di prezzo

**MACHINEABLE STEEL JAW PLATES (SOFT)**

Available on request for complete jaws and vises without price change

**Art. 234** (W)

Per ganasce fissa e mobile - Art. 120, 127, 129 - Larghezza normale (W)  
For fixed and movable jaw - Art. 120, 127, 129 - Normal width (W)

**Art. 235** (W2)

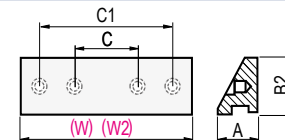
Per ganasce fissa e mobile - Art. 121, 128, 129 - Larghezza ridotta (W2)  
For fixed and movable jaw - Art. 121, 128, 129 - Narrow width (W2)

**Art. 252** (W)

Per ganasce fissa doppia Art. 123 - Larghezza normale (W)  
For double fixed jaw Art. 123 - Normal width (W)

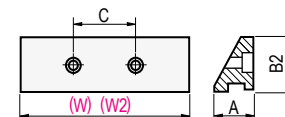
**Art. 253** (W2)

Per ganasce fissa doppia Art. 124 - Larghezza ridotta (W2)  
For double fixed jaw Art. 124 - Super narrow width (W2)



Cod. Art. 234	1.65.10200	1.65.20200	1.65.30200	1.65.40200	1.65.50200	1.65.60200
---------------	------------	------------	------------	------------	------------	------------

Cod. Art. 235	1.65.11200	1.65.21200	1.65.31200	1.65.41200	1.65.51200	1.65.61200
---------------	------------	------------	------------	------------	------------	------------



Cod. Art. 252	1.65.14200	1.65.24200	1.65.34200	1.65.44200	1.65.54200	1.65.64200
---------------	------------	------------	------------	------------	------------	------------

Cod. Art. 253	1.65.15200	1.65.25200	1.65.35200	1.65.45200	1.65.55200	1.65.65200
---------------	------------	------------	------------	------------	------------	------------

Per qualsiasi piastra ganasce speciale, raddoppiare il prezzo / For special tailor made jaw plate double the price

W	100	125	150	175	200	300
W2	74	94	124	144	169	194
A	14	20	24	24	29	35
B2	24,5	32	39	43	53	63
C	20	32	50	50	76	90
C1	62	80	90	116	138	184

Cod. Art. 230	1.65.10000	1.65.20000	1.65.30000	1.65.40000	1.65.50000	1.65.60000
Cod. Art. 230S	4.23.0S100	4.23.0S200	4.23.0S300	4.23.0S400	4.23.0S500	4.23.0S600

Cod. Art. 231	1.65.11000	1.65.21000	1.65.31000	1.65.41000	1.65.51000	1.65.61000
Cod. Art. 231S	4.23.1S100	4.23.1S200	4.23.1S300	4.23.1S400	4.23.1S500	4.23.1S600

Cod. Art. 248	1.65.14000	1.65.24000	1.65.34000	1.65.44000	1.65.54000	1.65.64000
Cod. Art. 248S	4.24.8S100	4.24.8S200	4.24.8S300	4.24.8S400	4.24.8S500	4.24.8S600

Cod. Art. 249	1.65.15000	1.65.25000	1.65.35000	1.65.45000	1.65.55000	1.65.65000
Cod. Art. 249S	4.24.9S100	4.24.9S200	4.24.9S300	4.24.9S400	4.24.9S500	4.24.9S600

**ATTENZIONE - ATTENTION:**

IN FASE D'ORDINE VERIFICARE QUOTE C - C1 - CHECK DIMENSIONS C - C1 IN CASE OF ORDER